

Anti-IL-22RA hlgG1 Reference Antibody (Temtobio)

Product Information

Product Name Anti-IL-22RA hlgG1 Reference Antibody (Temtobio)
Storage temp. Store at 2-8°C short term (1-2 weeks).Store at $\leq -20^{\circ}\text{C}$ long term. Avoid repeated freeze-thaw.

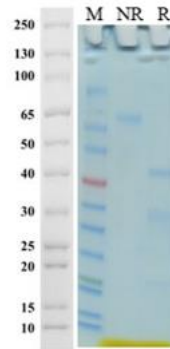
Catalog# / Size
GM-88094MAB-1mg / 1 mg
GM-88094MAB-5mg / 5 mg
GM-88094MAB-25mg / 5 mg*5 vials
GM-88094MAB-50mg / 50 mg
GM-88094MAB-100mg / 50 mg*2 vials

Antibody Information

Expression System CHO
Aggregation < 5% as determined by SEC-HPLC
Purity > 95% as determined by SDS-PAGE
Species Reactivity Human
Clone temtokibart
Source/Isotype Monoclonal Human IgG1(KDEL,N297Q) lambda2
Application Block assay
Specificity Detects IL-22RA
Gene IL-22RA
Background IL-22ra (Interleukin-22 Receptor a) is a cell surface Receptor that mainly binds to Interleukin-22(IL-22), thus playing an important role in immune response and cell signaling. IL-22 is a cytokine produced by specific T cells, such as Th17 cells and certain types of host immune cells, and is mainly involved in the regulation of inflammatory responses and defense mechanisms in epithelial cells.
Storage Store at 2-8°C short term (1-2 weeks). Store at $\leq -20^{\circ}\text{C}$ long term. Avoid repeated freeze-thaw.
Formulation Phosphate-buffered solution, pH 7.2-7.4.
Endotoxin < 1 EU/mg, determined by LAL gel clotting assay

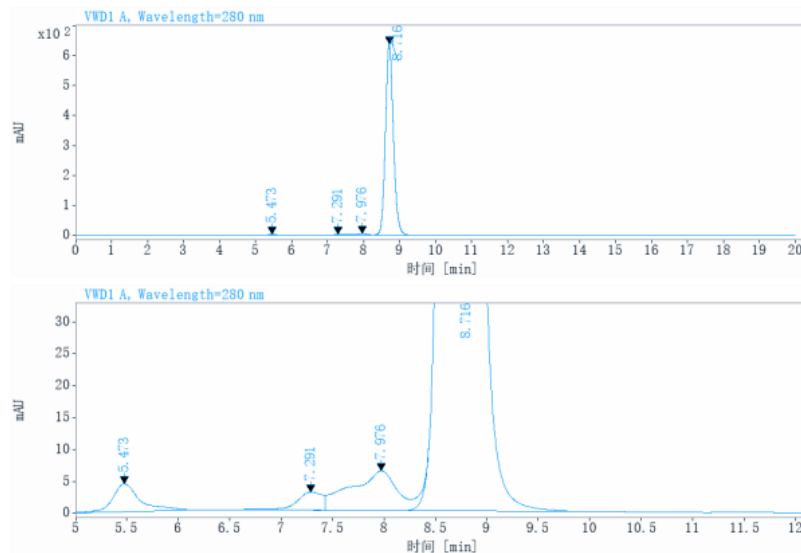
Data Examples

SDS-PAGE



On SDS-PAGE under reducing (R)/non-reducing(N-R) condition. The gel was stained overnight with Coomassie Blue. The purity of the protein is greater than 95%.

SEC-HPLC



The purity of this product is more than 95% verified by SEC-HPL

Block assay

The stimulate effect of 40 ng/mL Human IL-22 Protein; His Tag (Catalog # GM-88080RP) for H_IL22 Reporter 293 Cell Line (Catalog # GM-C19682) was inhibited by increasing concentration of Anti-H_IL-22R1 hlgG1 Antibody(ARGX-112) (Catalog # GM-46382AB), Anti-IL-22RA hlgG1 Antibody (280.346.TSY) (Catalog # GM-88095AB), and Anti-IL-22RA hlgG1 Reference Antibody (Temtobio) (Catalog # GM-88094MAB).

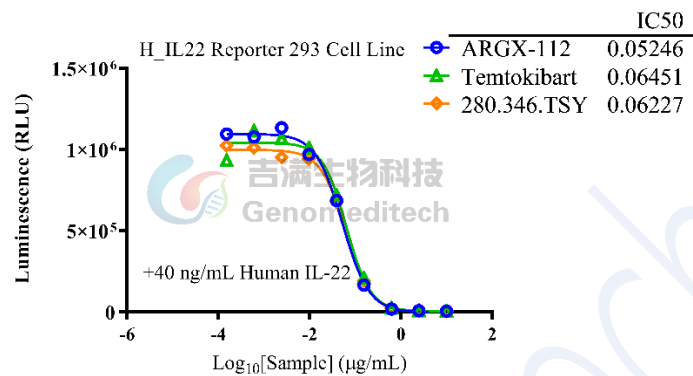


Fig. assay